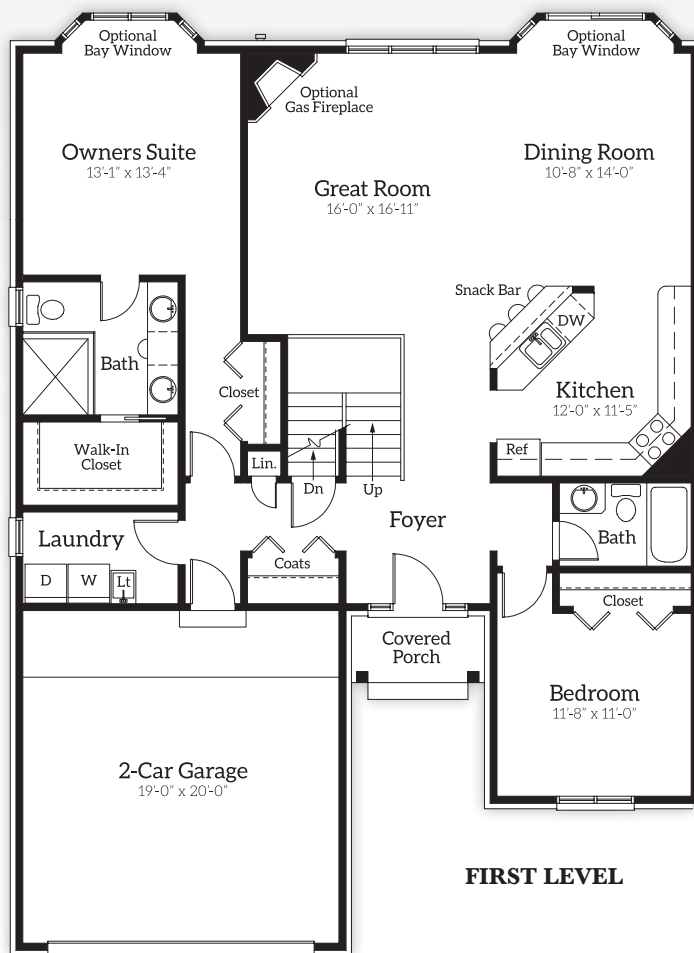
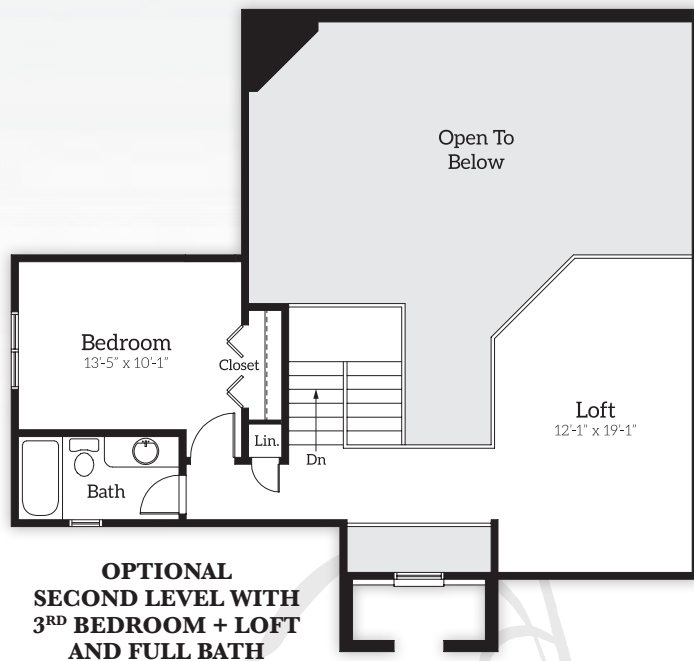


Lottivue Riverside

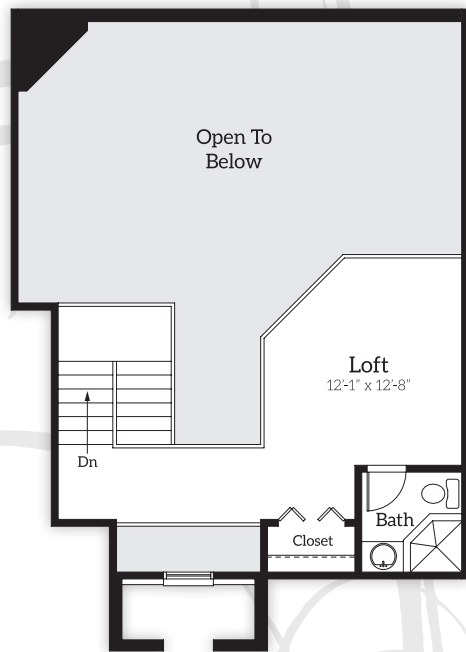
Riverwood



FIRST LEVEL



**OPTIONAL
SECOND LEVEL WITH
3RD BEDROOM + LOFT
AND FULL BATH**



**OPTIONAL
SECOND LEVEL
WITH LOFT AND FULL BATH**

2 Bedroom, 3 Bath | Approx. 1,535 SF | With Loft + Full Bath Approx. 1,829 SF
With Loft + 3rd Bedroom + Full Bath Approx. 2,091 SF

The **Riverwood** offers amazing design to cultivate stylish, carefree living. The private entryway opens to a foyer with a direct sightline to the open concept great room, dining area and kitchen, which feature ample natural light. An optional cozy gas fireplace in the great room is perfect for entertaining. Cooking enthusiasts can delight in the snack bar, dual sinks and ample prep space. With first-level laundry and a drop zone off the private two-car garage, the **Riverwood** is perfect for carefree living.

The spacious master suite features an optional bay window with tranquil views of the lush greenery outside. The master bath features dual vanities and a generous walk-in-closet, providing additional convenience for seamless living. A second first-level bedroom offers the comforts of a private full bath. The loft space with a third full bath provides an additional haven for relaxation, plus the option for a third bedroom, making this an ideal design for families seeking additional space.